

FAQs about Pandemic-EBT for Children & Families Served by Child Welfare Services

P-EBT and Provision Schools

1. How does P-EBT work for students attending schools that are providing meals through a Provision such as Community Eligibility Provision or Provision 2?

For the purposes of P-EBT, all students who attend a Provision school are considered eligible for free and reduced-price school meals.

If a student is directly certified, they do not need to apply for P-EBT and will automatically receive a P-EBT card in the mail. If a student is not directly certified and does not receive a P-EBT card in the mail by about May 22nd, they can apply for P-EBT online. The P-EBT online application opens on May 22nd at: ca.p-ebt.org

See question and answer #5 and #6 below for more information about children who apply or are directly certified for free or reduced-price school meals on or after March 16, 2020.

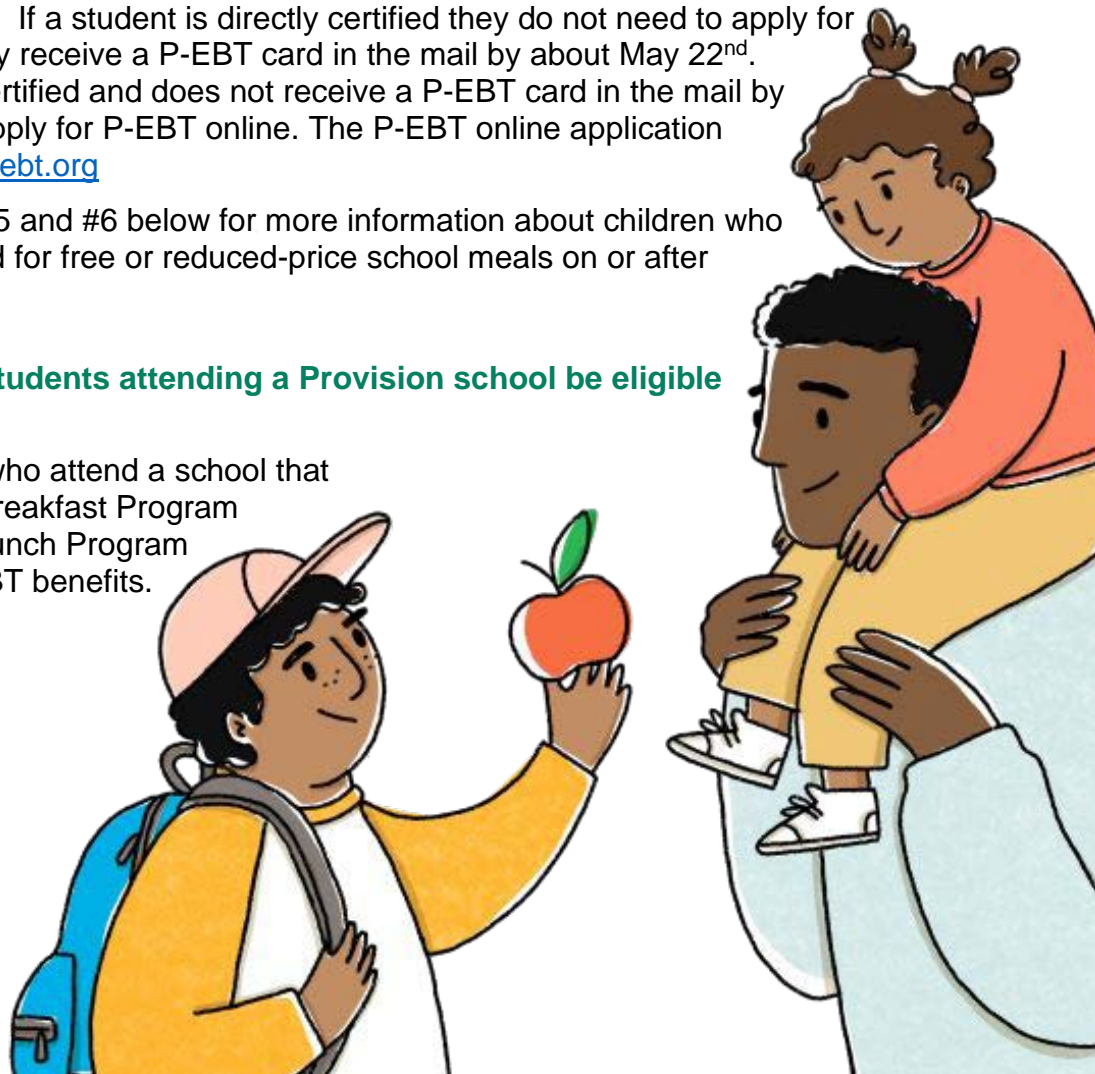
2. Our district operates Provision 2 for only one meal service. How will P-EBT eligibility be determined for these children?

Because all children in the district receive a free meal through Provision 2, for the purposes of P-EBT, all those children are considered eligible for free and reduced-price school meals and therefore eligible for P-EBT. If a student is directly certified they do not need to apply for P-EBT and will automatically receive a P-EBT card in the mail by about May 22nd. If a student is not directly certified and does not receive a P-EBT card in the mail by about May 22nd, they can apply for P-EBT online. The P-EBT online application opens on May 22nd at: ca.p-ebt.org

See question and answer #5 and #6 below for more information about children who apply or are directly certified for free or reduced-price school meals on or after March 16, 2020.

3. Will younger siblings of students attending a Provision school be eligible for P-EBT?

Only school aged children who attend a school that participates in the School Breakfast Program (SBP) or National School Lunch Program (NSLP) are eligible for P-EBT benefits.



P-EBT Eligibility for Children Determined FRP Eligible On or After March 16

4. Can school districts continue to process applications for free or reduced-price school meals?

Yes. If a family's socio-economic status has changed, they may apply for free or reduced-price school meals. If determined eligible, the family may also apply for P-EBT.

5. If an eligible family completes a paper or online application on or after March 16 (the average date of school closures statewide used for P-EBT purposes), are their children eligible for P-EBT?

Yes. If a family submits a school meal application on or after March 16 and they are determined eligible, this family can apply for and receive P-EBT benefits.

6. If a student is determined eligible to receive free or reduced-price school meals through direct certification on or after March 16, is the student eligible for P-EBT?

Yes. If a student is directly certified for free or reduced-price meals on or after March 16, this student will automatically receive P-EBT benefits. The date the P-EBT card arrives in the mail and the amount of P-EBT benefit issued depends on the date the student is directly certified.

7. How will P-EBT benefits be calculated for a student that was determined eligible for free or reduced-price school meals based on an application at the start of the school year, but was then recently (e.g. on or after March 16) directly certified for free or reduced-price school meals?

In this scenario, the P-EBT eligible family should submit a P-EBT application online. The family will receive the full P-EBT benefit amount of \$365 per child.

General P-EBT Eligibility

8. If a family has a toddler and receives CalFresh, is the toddler eligible for P-EBT?

P-EBT eligibility is based on an individual student's eligibility for free or reduced-price school meals offered through the SBP or NSLP. Only those children eligible for free or reduced-price school meals and attending a school that participates in the SBP or NSLP are eligible for P-EBT.

9. Are children who attend kindergarten or preschool eligible for P-EBT?

P-EBT eligibility is based on an individual student's eligibility for free or reduced-price school meals offered through the SBP or NSLP. Only those children eligible for free or reduced-price school meals and attending a school that participates in the SBP or NSLP are eligible for P-EBT.

10. Are children participating in the Child and Adult Care Food Program eligible for P-EBT?

No. P-EBT eligibility is based on an individual student's eligibility for free or reduced-price school meals offered through the SBP or NSLP. Only those children eligible for free or reduced-price school meals and attending a school that participates in the SBP or NSLP are eligible for P-EBT.

11. Do school districts need to take any action to determine P-EBT eligibility, such as confirming families were eligible for free or reduced-price school meals during the school year?

No. School districts are not required to verify eligibility for free or reduced-price school meals. School districts are only being asked to assist with outreach to eligible families to ensure that P-EBT benefits reach needy families in their communities.

12. Are students who are experiencing homelessness and receiving free or reduced-price school meals through the McKinney-Vento act eligible for P-EBT?

Yes, these students are directly certified for free school meals and are eligible for P-EBT. If a student is directly certified they do not need to apply for P-EBT and will automatically receive a P-EBT card in the mail by about May 22nd.

